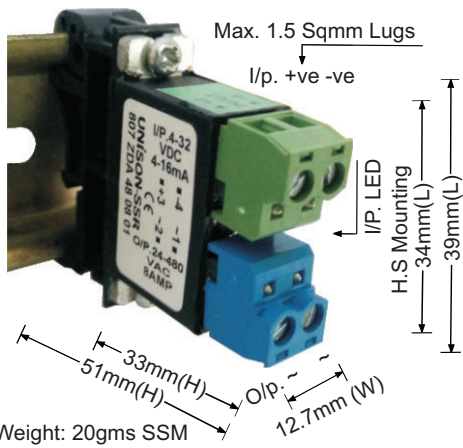


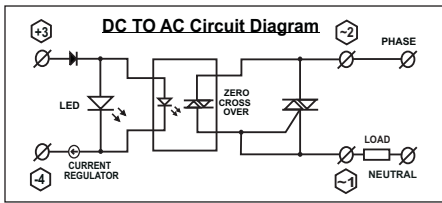
# SOLENOID VALVE - ON/OFF SOLID STATE MODULE - 807 MODEL

**8AMP-MODEL 807 ZDA 48 08 01**

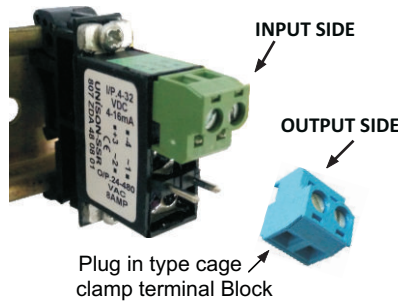


Weight: 20gms SSM

Model 807 - 8Amp  
 Input : 4-32VDC/4-16mA - Plug in type  
 Input LED Indication : **Green**  
 Output : 24-480VAC (47-63 Hz)- Plug in type  
 PIV : 800Vpk, I<sup>2</sup>T : 340A<sup>2</sup>S for 9.6mS  
 Body isolation : 3kV for 1min  
 I/P. to O/P. isolation : 2.5kV for 1min  
 Load Current : 4Amp @55 °C, Zero Cross Over SSM  
 No leakage current at output side  
 Single Phase Motor ON/OFF up to 1Hp

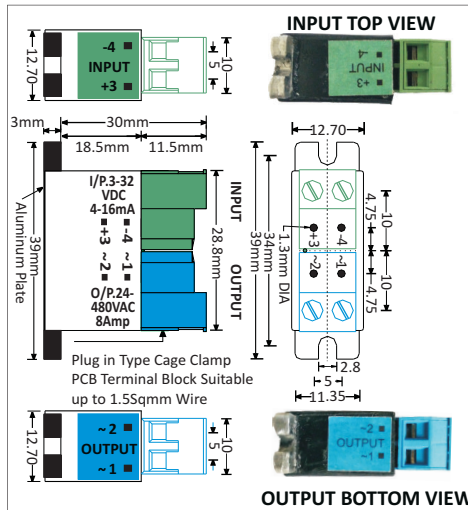


**807 MODEL**



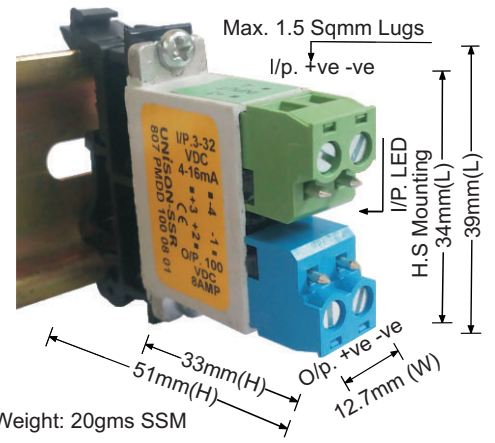
**4Amp Current at 55°C  
SSM Weight @ 20gms.**

**807 Model Dimension**



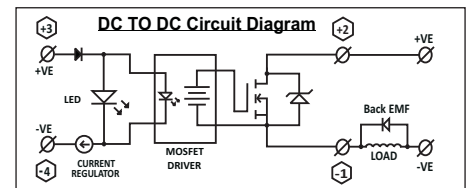
Plug in Type Cage Clamp  
PCB Terminal Block Suitable  
up to 1.5Sqmm Wire

**8AMP-MODEL 807 PMDD 100 08 01**



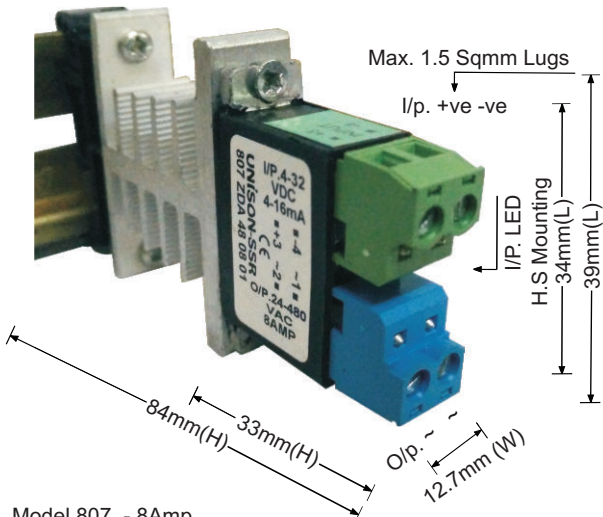
Weight: 20gms SSM

Model 807 - 8Amp  
 Input : 3-32VDC/4-16mA - Plug in type  
 Input LED Indication : **Green**  
 Output : 5-100VDC - Plug in type  
 ON State Voltage Drop :  $\leq 0.3Vdc$   
 Body isolation : 3kV for 1min  
 I/P. to O/P. isolation : 2.5kV for 1min  
 Load Current : 4Amp @55 °C  
 Turn ON time : 2.5 ms, Turn OFF time : 40  $\mu$ S  
 No Leakage Current at output side



**Across the Load Back EMF Diode is  
must for high frequency ON/OFF**

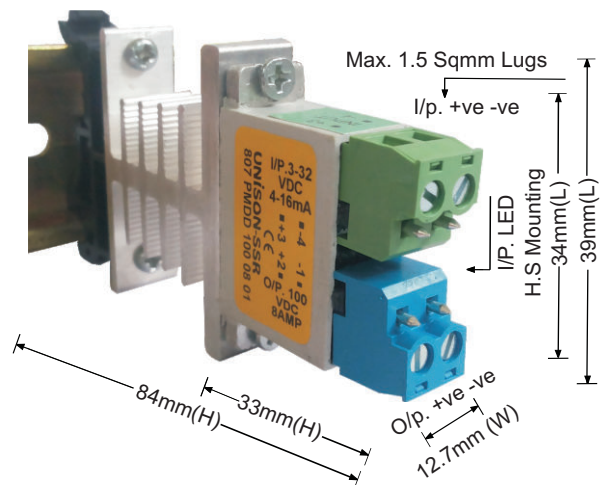
**8AMP-MODEL 807 ZDA 48 08 01  
WITH "G-12.5" H.S.**



Weight: 20gms SSM  
19gms Heat sink

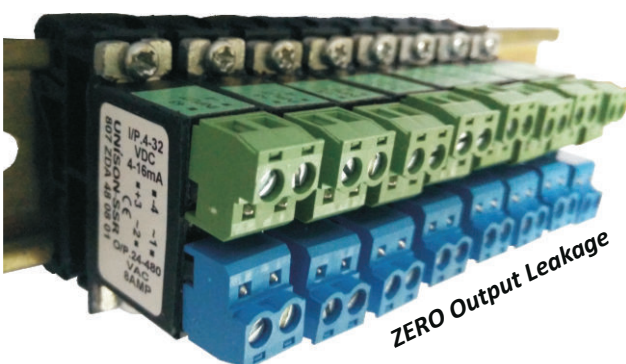
Model 807 - 8Amp  
 Input : 4-32VDC/4-16mA - Plug in type  
 Input LED Indication : **Green**  
 Output : 24-480VAC (47-63 Hz)- Plug in type  
 PIV : 800Vpk  
 I<sup>2</sup>T : 340A<sup>2</sup>S for 9.6mS  
 Body isolation : 3kV for 1min  
 I/P. to O/P. isolation : 2.5kV for 1min  
 Load Current : 8Amp @55 °C  
 With Heat Sink G-12.5 + Din  
 Zero Cross Over SSM  
 No leakage current at output side  
 Single Phase Motor ON/OFF up to 1Hp

**8AMP-MODEL 807 PMDD 100 08 01  
WITH "G-12.5" H.S.**



Weight: 20gms SSM  
19gms Heat sink

Model 807 - 8Amp  
 Input : 3-32VDC/4-16mA - Plug in type  
 Input LED Indication : **Green**  
 Output : 5-100VDC - Plug in type  
 ON State Voltage Drop :  $\leq 0.8Vdc$   
 Body isolation : 3kV for 1min  
 I/P. to O/P. isolation : 2.5kV for 1min  
 Load Current : 8Amp @55 °C  
 With Heat Sink G-12.5 + Din  
 Turn ON time : 2.5 ms  
 Turn OFF time : 40  $\mu$ S  
 No leakage current at output side



**LEAD - FREE  
RoHS  
COMPLIANT**

Approved By  
**CE**  
EN-60947-5-1

